

Helmet Earphone Receive Audio:

The receive audio control is designed to automatically switch from the mobile radio (control head) to the headset volume/PTT control buttons by activation of either the motorcycle ignition, or a kickstand switch (most common choice). These options are established prior to the installation of the motor kit (see the motor kit installation instructions for more detail).

Kickstand Switch: When the kickstand is placed in the “up” position, helmet receive audio will be provided by the mobile radio, headset volume can be adjusted at the radio control head. Volume control at the helmet buttons will not operate. When the kickstand is returned to the “down” position, helmet receive audio will be provided by the mobile radio and helmet button functionality is activated. Volume can now be adjusted and radio PTT is available on the helmet.


Ignition Switch: Operation with the ignition switch option is similar to the above kickstand switch only controlled with the ignition.

Ignition on = Volume at radio control head

Ignition off = Volume and PTT at helmet buttons

Note: The kickstand switch and ignition switch will only control the *receive* audio. Transmission audio is always available from either the mobile or the portable radio (Autoswitching systems) by pressing the appropriate switch.

CELL-PHONE CAPABLE HEADSETS: See accompanied instructions for operation of the cell-phone Bluetooth features.

 **Bluetooth**® The *Bluetooth*® word mark and logos are registered trademarks owned by Bluetooth SIG, Inc. and any use of such marks are under license.

Motor-One Wireless is a trade-mark of PVP Communications.

FREEDOM
SERIES

All Freedom™ Wireless products are protected by
U.S. Patent No. 6,311,052 - 7,062,301
7,203,525 & 9,042,944



wireless innovations for law enforcement

OPERATING INSTRUCTIONS



Freedom™ Series Wireless Headset For Mobile Radio Operation

United States Patent No.
6,311,052 - 7,062,301
7,203,525 & 9,042,944

2310 205th Street
Torrance, California 90501
(800)584-4119
www.pvpcom.com

OPERATION

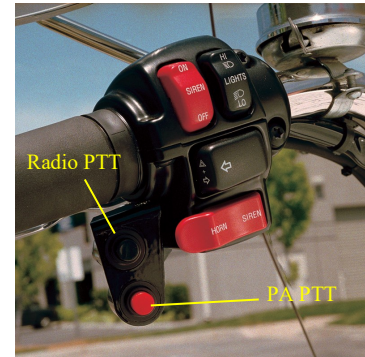
Thank you for choosing PVP Communications, Inc. products. We are dedicated to satisfying our customers by providing quality products and service. The components in this Kit are tailored for use in applications where durability, strength and quick installation are a must.

Please follow the Installation Instructions carefully to avoid damaging radio equipment or Kit components. If you have any questions during installation or require more information about this product you may call us at (310)212-5432 Monday through Friday, 7AM to 3PM Pacific Time, USA.

WARRANTY

This product comes with a warranty covering all defects in material or workmanship for a period of one year from date of original retail purchase. At its option PVP Communications, Inc. will repair or replace any defective part(s) or equipment. The provisions of the warranty shall not apply to any unit which has been subjected to misuse, neglect, incorrect electrical or mechanical installation, unauthorized modifications, accident, nor to units which have been repaired or altered outside of PVP Communications, Inc.. The warranty is extended only to the original owner of the PVP Communications, Inc. product and may not be transferred or assigned. In the event that the product does not conform to the warranty, the product should be shipped prepaid to PVP Communications, Inc.. Transportation charges, insurance fees, and labor costs for shipment, removal, or reinstallation of product are not covered by this warranty. Loss or damage in shipment is the sole responsibility of the freight carrier. Repair as provided under this warranty is the exclusive remedy of the consumer. PVP Communications, Inc. shall not be liable for any incidental or consequential damages or for breach of any express or implied warranty on this product. Except to the extent prohibited by applicable law, any implied warranty of merchantability, or fitness for a particular purpose on this product is limited in duration to the duration of the warranty. Some states do not allow the exclusion or limitation of incidental or consequential damages, or allow limitations on how long an implied warranty lasts, so the above limitations or exclusions may not apply to you. This warranty gives you specific legal rights which vary from state to state. PVP Communications, Inc. reserves the right to make changes in design and to make improvements in its products without the obligation to incorporate the changes or improvements in any of its previously manufactured products. PVP Communications, Inc. has not authorized anyone to make representations or warranties other than the warranty contained herein. The above warranty is effective for all products manufactured after 01/01/95.

After a pair (see **PAIRING** procedure) has been established between the headset and the motor kit the handlebar PTT switches are then available for use:



- The black switch (F1 on BMW motors), when pressed, will key the motorcycle mobile radio and allow radio transmission from the helmet microphone over the mobile radio.
- The red switch (F2 on BMW motors), when pressed, will key the Siren PA feature and allow a PA Broadcast from the helmet microphone over the siren speaker.

RADIO NOTE: When performing a mobile radio broadcast for the first time, it *may* be necessary to adjust the volume gain at the motor kit transceiver module (see the motor kit installation instructions for more details).

IMPORTANT: Set the helmet microphone volume to the same volume broadcast by the mobile radio handmic. **Too much volume will allow wind noise distortion at speed,** and not enough volume will be difficult to hear.

This can be accomplished very easily by alternatively monitoring and comparing (using another radio) the helmet microphone transmission volume with the handmic transmission volume.

PA NOTE: When performing a PA broadcast for the first time, it is more than likely that the volume will need to be adjusted. Too much volume will cause a feedback squeal, and not enough volume will be difficult to hear. Volume gain adjustment is in the motor kit module and may also be available on the siren amplifier.

NOTE: make sure the helmet microphone is on axis (not rotated) and held close to the users mouth (within 1/4”).

5) Within 10-15 seconds the wireless connection will be established. The motor kit will display a green status LED flash and the headset will provide an up stepping tone indicating that they have been successfully paired to each other. The system is now ready for use.

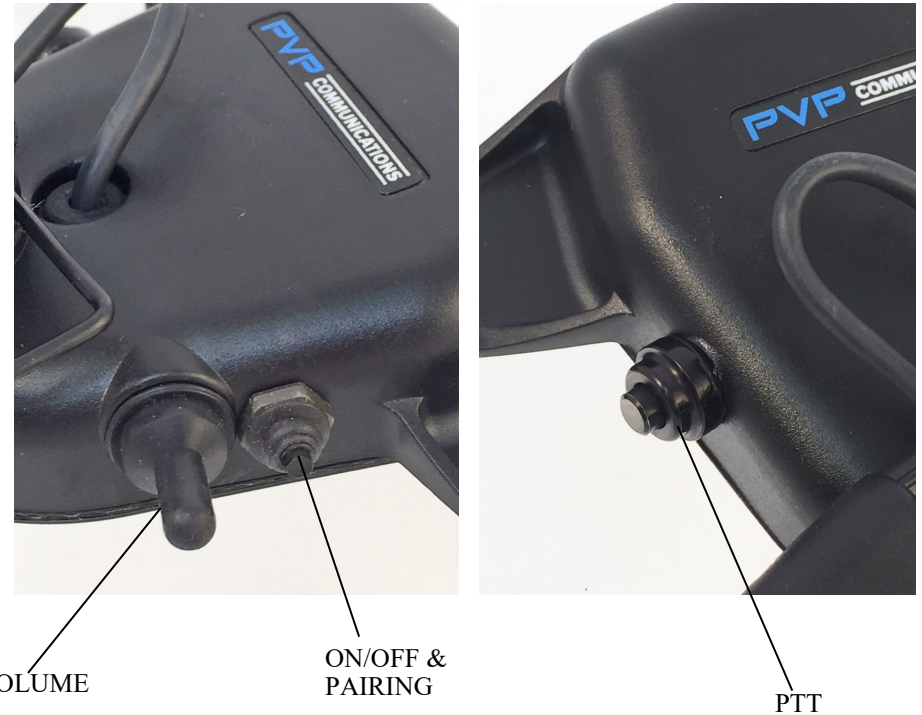


L.E.D STATUS INDICATOR	
○	Powered Off
● (orange)	Flashing rapidly— searching for mate (not paired yet)
● (green)	Flash every 7 seconds = paired, in stand-by mode
● (green)	Flash every 3 seconds = paired, active mode
● (green) ● (red)	Red/Green toggling back and forth =Pairing mode

Headset:

Two beeps = power on
 Three beeps = power off
 Up stepping tones = Paired
 Down stepping tones = unpaired

Freedom™ Wireless Headsets (MOBILE RADIO)



- Encrypted, secure, Digital Wireless A2DP **Bluetooth** Technology
- No interference from police radios or cell phone towers
- Easy, quick, one-time pairing process
- Unique wireless connection—no mechanical switches to keep track of, no DIP switches, no special tools
- No possibility of other users on the same channel
- Minimum 16 hours charge duration (continuous use)
- Waterproof—meets or exceeds IP67 standards
- 1 year warranty
- Only available from PVP Communications!

OVERVIEW

The Freedom Wireless Mobile radio headset is designed to provide a complete *Bluetooth* wireless connection to the mobile radio on your motorcycle. Once paired to the PVP XT Series* of motor kit, this system will provide you with wireless receive and transmission of the motorcycle mounted radio. It will also provide you with an interface to your PA via the helmet microphone. Once off of the motor, this system will allow you the same radio audio and provides a radio PTT and radio volume control on the helmet. All this with no cables to connect or disconnect and with the safety of handlebar mounted PTT switches.

* Use with earlier model motor kits will cause the helmet mounted PTT switch and volume control to be inoperable.

CHARGING

Your headset is powered by an internal Li-Ion battery. **Before the first use** and after every use the battery needs to be fully charged. Use the charger supplied with the headset to charge. **DO NOT** use any other charger other than the charger provided with this headset.




NOTE: A fully charged battery will last a minimum of 16 hours (continuous audio). Although the battery may last for more than one day's use, it is recommended that it be charged daily. Always leave the headset charging when not in use.

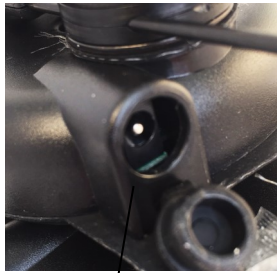
NOTE: Li-Ion batteries do not have the memory issues found on Ni-Cad batteries. Therefore it is not necessary to fully drain the battery before charging.

The average life of this battery is 1,000 cycles (about three years)

IMPORTANT: Contact PVP Communications regarding any battery issues or need of replacement.

CHARGER—STATUS LED

-  Green (no headset connected) = ready to charge
-  Green (connected to headset) = Fully charged battery
-  Red = Charging (may take up to 4 hours to fully charge)



CHARGING PORT
Note: replace port boot after charging to protect from environment

PAIRING

Prior to first use; the headset must be “paired” to a motor kit. Pairing establishes a unique link between the wireless headset on the officer and the motor kit on his motorcycle that will not interfere or be interfered with when other wireless motorcycle systems come within range. Once a pairing procedure has been completed, it is “remembered” by both the motor kit and by the headset. A new pair may be established at any time (i.e. riding a spare motor), but until a new pair is established, the headset and the motor kit will remain “faithful”, responding only to their mate. They will remember who their mate is—even *after having been powered off*. This pairing process is only necessary once unless you re-pair to a different motorcycle.

Note: It is important to perform the pairing procedure while away from other PVP wireless systems (i.e. another motor with the wireless system powered on). While in the pairing mode the device is searching for a partner. Multiple devices in the local area can confuse the pairing sequence. This only applies during the few seconds needed to establish an initial pair. After the devices are paired they can function side-by-side with no interference.

1) PAIRING PROCEDURE:

Power off headset by pressing the headset pairing switch (see page 1) for 2-3 seconds until the headset beeps three times. (2 beeps = on/3 beeps = off). The wireless device will now power off.

2) Verify motor kit still has power connected to it (ignition turned on or mobile radio turned on, etc.) Power off the motor kit by pressing the pairing switch, same procedure for power down as headset except use LED to indicate status.

3) **From the powered off condition**, press and hold the pairing switch on motorcycle for 7-9 seconds until the LED begins toggling red-green-red-green, then release. The motor kit has now powered on into pairing mode and is searching for a mate. Immediately proceed to the headset.

4) With the headset in the powered off condition, press and hold the pairing switch at the headset. You will hear two beeps (on status) but continue to hold headset pairing switch until you hear another set of tones. The headset is now in the pairing mode and searching for its mate.